

Oread Neighborhood Association

NEWSLETTER

Lawrence, Kansas

Volume XXXI, No. 2

Winter, 2009

Oread Neighborhood Association's Mission Statement: The mission of the Oread Neighborhood Association is to stabilize and maintain the neighborhood as a quality, mixed-density residential neighborhood by accommodating the need for student housing, preserving existing single-family housing, and revitalizing the neighborhood's unique architectural, environmental, and historical character. This mission is accomplished by encouraging the participation of residents and property owners in the maintenance, planning and development of the neighborhood.

January 22nd Neighborhood Meeting

Expansion of Rental Licensing/Inspection Program

The Planning and Development Services Department will be presenting a proposal in February to the City Commission to expand the rental licensing/inspection program to all rental units within the City of Lawrence which are 50 years or older. Oread residents and property owners will have an opportunity to learn about the proposed changes at the January neighborhood meeting. Brian Jimenez, Code Enforcement Manager, will provide neighbors with the opportunity to review the proposal and make comments.

If you won't be able to attend the neighborhood meeting on January 22nd, additional information on the proposed changes and a link for public comment via email can be found at: www.lawrenceks.org/pds/Rental. You can also contact Brian Jimenez at bjimenez@ci.lawrence.ks.us (785) 832-3111.

Neighborhood Blight Survey

Because the Oread neighborhood is an older, highly transient neighborhood, with an increased potential for environmental and structural blight, a walking blight survey was initiated in 2008. A total of 312 Oread properties have been surveyed and of those, 104 include one or more structural items that have been identified as 'very poor' or 'poor.' A property condition map has also been obtained from the County Appraiser office to use as a reference to identify potentially blighted properties. The neighborhood association will discuss this initiative with Brian Jimenez to identify how to proceed with the property condition information that has been gathered. Ultimately, this initiative will enhance stability in the neighborhood and improve housing stock.

February 26th Neighborhood Meeting

Protecting the Energy Independence of Kansas

Westar Energy Presentation

The presentation will review the growing demand for electricity and how Westar Energy is working to match supply with demand. Neighbors will also learn about what Westar Energy is doing to invest in our future energy independence, including wind power. The presentation will end with some low cost energy efficiency tips and there will also be a giveaway for everyone who attends the presentation which includes a compact fluorescent lamp.



Board Member Elections

The neighborhood association's annual meeting will be held in February; the Board of Directors will be elected. The time commitment for a board member includes attendance at monthly neighborhood meetings. Your interest and passion for the neighborhood will dictate the amount of time and energy you invest outside these meetings. The important thing is that you have an opinion to share and a willingness to identify areas that need improvement in the neighborhood.

There is a need for a student voice on the ONA Board of Directors. This would be a great civic opportunity for the right person. If you are a KU student who lives in Oread, please consider this opportunity to participate.

Make Plans to Attend...

All neighborhood residents, 18-years of age or older, and property owners can attend Oread Neighborhood Association meetings... not just those that have paid neighborhood association dues.

Time: 7:00 PM

Location:

**Plymouth Congregational Church
Northeast Entrance**

2009 Meeting Dates:

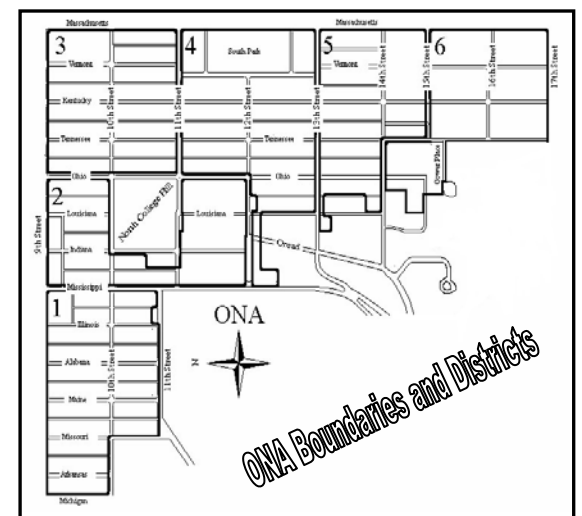
**January 22nd
February 26th
March 26th
April 23rd
May 28th
June 25th
July 23rd
August 27th
September 24th
October 22nd
November 19th
December (TBA)**

The Oread Neighborhood Association website can be found at:
oreadneighborhood.org

Your participation and interest in the neighborhood association is appreciated.



Pictured above is a gingerbread house purchased by Stephens Real Estate at the 12th Annual Gingerbread Festival & Auction. Proceeds from the event benefit Big Brothers Big Sisters of Douglas County. This gingerbread house was donated to the Castle Tea Room.



1005 Indiana Reconstruction is Underway

1005 Indiana was destroyed by fire in July 2008. Two variances were considered by the Board of Zoning appeals at the November 2008 meeting; to reduce the building setbacks for a principal structure in an RM32 District and to not provide any off-street parking spaces.

Because the city determined that the reconstruction cost would not be more than 50% of the property's value, a variance was not needed for the request to have no off-street parking.

The burnt structure is being rebuilt instead of building an entirely new structure on the existing foundation. This is what was required by the insurance company. This residence will continue to be used as an 8-bedroom congregate residence.



Before the Fire

January 2009 Photos



View from Indiana Street



View from the Alley

Eat, Drink, Sleep, Volunteer



*Learn how you can help at one of our
info meetings:*

*Wed. 1/21 6pm, Library Gallery Room
Mon. 1/26 6pm, Borders' Coffee Shop*

785/841-2345
www.hqcc.lawrence.ks.us



Updating the Oread Neighborhood Plan

A positive outcome from the City Commission's decision to allow demolition of 1232 Louisiana is that no building permit will be issued until an updated Oread Neighborhood Plan has been approved.

The City is beginning work to update the current Oread Neighborhood Plan which was originally adopted in 1979. Information regarding the planning process will be available starting the week of January 26th on the Planning & Development Services website at www.lawrenceks.org/pds/draft_plans. You will be able to find up-to-date information about the process and be able to sign up for a listserv to receive email updates regarding the plan.

As part of the planning process, various public meetings will be held. Property owners, tenants and interested individuals are invited and strongly encouraged to attend to give input to the plan. These will be your opportunities to give input and be involved in the plan that will guide the future of the neighborhood.

For questions or comments, contact Michelle Leininger, Area/Neighborhood Planner at 832-3163.

Still Standing 1232 Louisiana

On August 12, 2008, the Lawrence City Commission approved the demolition of 1232 Louisiana. The outcome of a safety inspection revealed that the existing structure is unsafe and dangerous in its current condition and a detriment to the welfare of the surrounding neighborhood.

Rezoning the property from University District (U) to Multi-Dwelling Residential District (RM-32) was handled as an Administrative Review.



Resolution No. 6791, adopted by the Lawrence City Commission 08/12/08, states that documentation of the structure to be demolished shall be conducted by a professional that meets the National Park Service Professional Qualification Standards. If documentation is not submitted to the Historic Resources Administrator within 30 days from the adoption of this resolution, the City may produce the documentation with any cost associated with the documentation assessed to the property.

The following information was received from Planning and Development Services in November 2008:

- Mr. Price Banks, representing the property owners, has indicated that the information requested by the city to approve the demolition request will not be provided. Specifically, it is felt that the documentation of the structure is excessive. There are plans to ask the City Commission for relief from this requirement. City staff is gathering informal bids from individuals on the cost of the documentation needed.

In the meantime, the structure that was identified as being a public safety hazard is still standing.

Cheers and Chides from the Oread Neighborhood
by Marci Francisco

Cheers to everyone who shared the holiday warmth with their families, friends and neighbors, especially to those who reached out to others experiencing difficult times. Cheers to everyone who has turned down their thermostats to save on energy; chides to those who haven't made sure their storm windows are in place.

Cheers to neighbors, the downtown and the organizers of the community Hanukah lighting ceremony in South Park whose holiday lights brightened our neighborhood. Cheers to our Oread neighbors whose orchard produced local chestnuts for roasting, stuffing and soups for the holidays.

Cheers to those who shoveled the snow off steps and sidewalks. Chides to those who still need to buy their snow shovels.

Cheers to those who are investing in improvements in our neighborhood; chides to those whose vandalism is wasting time and resources.

Cheers to everyone who is already registered to vote and participated in the county, state and national elections. Chides to those who still aren't registered – please note that you have until March 23rd to register for the upcoming local general elections for city commission and school board.

Cheers for those extra parking spaces on our streets during the holidays but we're now looking forward to having our student neighbors back in town.



The Day Center's Living Room



The Front Room in the Family Promise Day Center



The Kitchen in the Family Promise Day Center

FAMILY PROMISE OF LAWRENCE
 Hospitality for Children with Families Facing Homelessness

Family Promise of Lawrence is a program that will transform the lives of children and families facing homelessness by providing them with safe shelter, food, transportation, training, counseling and other assistance in a compassionate setting.

The program that began in December 2008 accommodates up to four families (14 persons maximum) at a time through the efforts of faith congregations in the community. In the Oread Neighborhood, *Plymouth Congregational and First Christian Church* are host congregations that house and feed the families in their church facilities. Each congregation houses the families for one week every quarter. Families are transported to the church facility at 5:30 every evening, where trained volunteers have set up private sleeping accommodations for each family and serve the evening meal and breakfast. Other trained volunteers spend the evening with the families, offering tutoring to school children if desired. One male and one female volunteer will the night in the building in which the families sleep.



The Day Center at 905 Tennessee

After breakfast, families are taken by van to the Family Promise Day Center, also located in the Oread neighborhood at 905 Tennessee, at 7 a.m. The families store their belongings at the Day Center during their stay in the program. School children are bused to school from the center; showers and laundry facilities are provided there as well. The center is staffed by a full-time director, Valerie Miller Coleman (785) 764-9506, who provides training, counseling, and coordinates the program.

Similar programs are currently in operation in 129 communities throughout the country, including one in Johnson County. In 2007 Family Promise programs served 3100 families, including 5723 children. The average length of stay in the program was 56 days. Eighty percent of the guest families were placed successfully in permanent and transitional housing.

Every public school in Lawrence has homeless children. This program is specifically designed to address their needs and, over time, reduce their numbers. There are also infants/toddlers in the program. Donations of diapers are always welcomed for these special participants.

Water's Edge

WHITE FROG SALE
Half the price, All the fun !!-
up to 50% off selected items
 you half to see it !



WINTER HOURS
 open tues-sat, 9 - 5
 sun 11 - 4
 (closed mondays)

fun and functional stuff
we want you to half

The Merc is Your Source for Local Food

- Local food is fresher
- Local food tastes better
- Local food is safer
- Local food supports small producers
- Local food builds community
- Local food expands our local economy
- Local food is better for the environment



**COMMUNITY MERCANTILE
MARKET & DELI**
9th & Iowa · Lawrence
7am – 10pm · 785 843 8544
www.TheMerc.coop

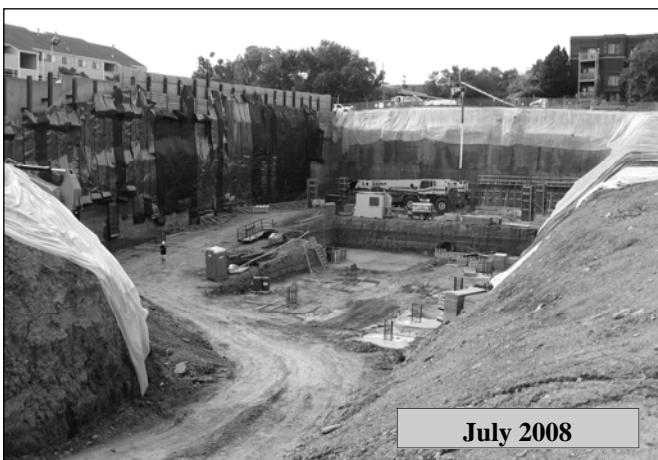


January 2009

The Oread Inn Is Movin' on Up

While there have been some setbacks along the way, the progress that has been made since summer 2008 is evident. The highest parking level, level P1, has been poured and work is beginning on the next level which will bring the building up to 12th street elevation.

The developers hope to submit street plans for the entire area in the next couple of weeks. They'd like to begin working on this during the week of spring break - trying to get the streets back to normal as soon as they can, but certainly by August. These improvements will include a set of stairs to Mississippi street from 12th street.



July 2008

SLAB Encourages KU Students to be Good Neighbors

The Oread Neighborhood Association appreciates the public outreach efforts made by the KU Student Legislative Awareness Board. At the beginning of the fall 2008 semester, SLAB distributed "Good Neighbor" door hangers in the neighborhood. These were used to educate college students about several local and state laws that they might encounter. The door hanger information is provided on the right to serve as a reminder for returning students and give a heads-up to those who are new Oread residents.

Loose Trash Reminder

Please refrain from setting out trash more than 24 hours in advance of your collection day. This can exacerbate the presence of loose trash in the neighborhood caused by animals, wind, etc. prior to the arrival of collection crews. If loose trash is found to be chronic at your residence, the city can issue a notice of violation.

Let's Keep Oread Clean

kegs



- the purchaser of the keg can be charged for supplying minors with alcohol if caught by police.

illegal possession



- under 21? you can get an MIP even on private property.
- police may have the right to enter private property if responding to a complaint. if they see illegal activity they may detain those involved.
- under 21 with an unopened bottle in your car? that's illegal possession.

the result: fine from \$300-\$500, spend up to 30 days in jail and up to 40 hours community service

fake IDs



- any falsified document can count and result in a felony.
- even holding a friend's ID can result in a conviction.

the result: up to a year in jail, \$300-\$2,500 fine, and up to 100 hours of community service.

open container



- the result is up to a \$200 fine with possible suspension of license after the second conviction

www.kuslab.com

public urination

any person found urinating in public could be charged with a misdemeanor

trash

properties must be kept clear of trash. a fine could result from not doing so.

important numbers

- Emergency 911
- KU Info (785) 864-INFO
- Legal Services for Students (785) 864-5665
- Poison Control Center (800) 222-1222
- Police (Non-emergency) (785) 832-7501
- SAFE Ride (785) 864-RIDE
- Watkins Student Health Center (785) 864-9500

The Student Legislative Awareness Board is YOUR voice to the Lawrence City Commission, the Kansas State Legislature, the Kansas Board of Regents, and Congress to name a few. To continue allowing us to represent you at these influential organizations, please check off our \$5 Optional Campus Fee on your Enrollment and Pay.

www.kuslab.com

Source: Michael Gray, SLAB Legislative Director.



Sale of 1043 Indiana Pending

This property, owned by the University of Kansas, was approved for sale to the public by the Kansas Legislature during the 2008 legislative session. The original timeline for sale was fall 2008.

An appraiser was hired in September 2008 to prepare two bids. Those were:

- Option 1: A bid for the house and lots 11 and 12 only.
- Option 2: A bid for the house and lots 10, 11, and 12. Option 2 may give enough parking flexibility for any future owner.

The survey had been completed and appraisals were underway in October.

November 2008

According to Barry Swanson, KU Associate Comptroller, the University is not ready to move forward with the sale of this property. The KU Facilities Operations Housekeeping Department has moved out of the home and it is now vacant.

No further information has been received from the University regarding the future of 1043 Indiana.



Pictured on the left is a second floor dormer; peeling paint can be seen on the trim. According to definition by city code, the exterior of 1043 Indiana is in a blighted condition.

A hypothetical scenario was presented to Planning and Development Services to determine how much parking would be required if it would be renovated into a boarding house. Prior to use by the University, there were eight bedrooms in this home. Eight bedrooms, with a maximum of two occupants per room, would require a total of 12 parking spaces (i.e.: 1.5 spaces per two occupants).

The neighborhood would like for the University to sell enough property with the house to ensure that parking can be made available by the future property owner. The back half of adjacent lots could be re-platted to meet this need. This would also ensure that the existing parking on the front half of the lots, accessed from Indiana Street, would be retained by the University.



View from Indiana



View from Back Alley

Campus Heritage Plan

The Campus Heritage Plan was finalized in 2008. This provides the campus and University community with an understanding of the historic development of the campus. The plan documents the history of campus development and offers a resource for addressing future changes to the physical campus.

The goal of this Campus Heritage Plan is to promote the stewardship of KU's historic campus by identifying, interpreting and protecting the most important vestiges of sites, architecture and landscape design. The goal is to preserve for future generations a university campus that tells stories of the challenges, investments and achievements of the previous administrations, students, faculty and staff who have participated in this university environment.



The University of Kansas, c.1908

Source: University Archives, Kenneth Spencer Research Library, University of Kansas (ksrl.ua.024p.1908).

The Castle Tea Room Comes to Life

Photograph of General Roberts



It was General Roberts who had the Castle built as his home in 1894. It was Libby Kriz-Fiorito's passion and vision that have transformed the Castle into the gem that it is today. Visitors will be awed when they arrive for their first visit.

The old and the new have been blended seamlessly. Draperies hang in the doorways, stained glass has been returned to the windows, and restored hardwood gleams from underneath ornate rugs. If you look a little closer, you'll also be impressed by the handicap accessible elevator, the floor to ceiling convection ovens and three restaurant quality refrigerator, freezers.

Some might be disappointed to learn that the pink bathroom on second floor no longer exists. This has been replaced with a 21st-century men's restroom. Others will be pleased to know that Libby's china and glassware is on display throughout the home.

There are a few administrative details that need to be ironed out before the Castle is ready for public use. There's little doubt that the reservations list will fill up quickly when the doors are finally open.

Photograph of Libby Kriz-Fiorito



Objectives of the Campus Heritage Plan:

- To understand the unique role of the Mount Oread site in the founding and growth of the campus.
- To identify "Periods of Development" when the campus exhibited significant changes in formative characteristics related to site, architectural and landscape development based on the efforts of preceding years.
- To create historic contexts for understanding the value and relative importance of sites, buildings and landscapes from all periods.
- To document the most important remaining vestiges and lost features of the historic campus in order to assess their relative importance within given historic contexts.
- To further clarify the Environs review and capital planning processes by identifying the most appropriate, sustainable and cost-effective treatments for historic resources.
- To create a base of historic understanding of the evolution of campus and its historic resources that can inform projects that may change the campus environment.
- To further a commitment to stewardship of the historic physical attributes of the University of Kansas campus in Lawrence.



The plan is available for download in sections (in pdf format) and compressed (in zip format) at:

www.dcm.ku.edu/planning/heritage.shtml

records



CDs



cats



Love Garden
936 1/2 Mass.
(upstairs)
Lawrence
(785) 843-1551

WE BUY CDs & LPs

Lawrence Community Shelter*From the Director's Letter***TODAY**

Over the last 11 months of 2008, the LCS staff met the "today" demands of the guests through its daily living (laundry, telephone, mail, storage, breakfast, refuge from extreme weather) and case management (housing, jobs, benefits, intervention) programs. The day shelter serves 50+ individuals a day and the night shelter sleeps 31 and often turns away 14 or 15 individuals a night.

The case managers have helped

- 121 people move into permanent housing or apply to the Housing Authority
- 65 people find permanent or temporary jobs
- 122 people apply for ID, licenses, or disability
- 55 people taken to substance abuse detox or rehab
- 65 people taken to the hospital emergency room
- 53 people referred for mental health treatment

TOMORROW

Relocation - The Lawrence Community Shelter occupies a building that is inadequate and only partially handicapped accessible. The board of directors has three committees (building/site, capital campaign, and program) planning for a relocation of the shelter as soon as possible. A capital campaign will start in 2009 for a facility that will be the one emergency shelter for Lawrence/Douglas County.

HOW YOU CAN HELP

- \$ 10 = Basic health (toiletries, bedding, towels)
- \$ 25 = Basic food (breakfast, dinner, coffee, sugar)
- \$ 50 = Basic medical (prescription assistance, aspirin, Neosporin)
- \$ 75 = Basic work (job searches, transportation, job coaching)
- \$125 = Basic care (shelter 1 guest for 1 week)

Thank you for your donations throughout 2008. What 2009 will bring is uncertain but it is clear, whatever happens to the economy, that the need will not lessen. Since the LCS Drop-In Center is the primary place for people to come during the day time and in severe weather, the day room is always crowded and, because of the limited capacity, the night shelter is always full.

Please help the LCS with a gift to be able to continue serving people experiencing homeless in our community.

Making Good Marriages Better

**February 28
1:00 to 4:00 pm**

**Rev. Virgil & Mrs. Elaine
Brady**

Call to register



**Central United
Methodist Church**

15th & Mass. 785.843.7066
www.centralumclawrence.org



The Oread Neighborhood Association participated in the Lawrence Community Shelter annual block party. Everyone who attended the event had a good time.

The neighborhood appreciates that Checkers grocery was able to give them a discount on the food purchased for the event; the Oread neighborhood contributed hot dogs, buns and veggie burgers. THANK YOU!



**LAWRENCE POLICE DEPARTMENT
CRIME PREVENTION BULLETIN
WINTER 2009**

The Lawrence Police Department encourages citizens to call the police immediately when observing suspicious behavior or criminal activity. To report emergencies or crimes in progress call 911. For non-emergency assistance call police dispatch at 832-7509.

Suspicious behavior to watch for

- Individuals going door to door in the neighborhood. Door to door sales is a legitimate business, however, it is occasionally used to determine if residents are home and to more closely inspect residences.
- Persons loitering in an area for long periods of time, someone walking through an apartment complex who does not live there or individuals asking to use your phone or for directions.
- Footprints in the snow or mud can indicate if someone has been inspecting a residence. If footprints lead to the side or back of a home, or go from door to door or window to window, the situation should be reported to police.

Residential Safety Tips

- Use timers to give your home a lived in appearance when you are not home. Keep shades drawn at night.
- Make certain all doors are securely locked, whether you are home or not. Use of deadbolt locks and security chains offer additional protection.
- Keep windows locked, especially those on ground floors. Screens offer protection from insects, but offer little resistance to an intruder.
- Utilize home alarm systems when available.
- Never open door to strangers; require ID of service or repair people.

Numbering Buildings

City Code 16-113 requires property owners to affix the assigned building number (address) in a conspicuous place, so it can be read from the street. Properly marked buildings assist emergency personnel in quickly identifying the location in case of crime or need for medical or fire assistance. Multiple apartments in a building should also be clearly marked.

For crime prevention information please call the Community Services Division, Neighborhood Resources Officers at 830-7410. The Neighborhood Resource Officers can also be reached by email at: nro@lkpd.org.

**The President's Volunteer Service Award**

Central Junior High School has applied to be a Certifying Organization with authority to award the President's Volunteer Service Award. It is a year-round program where students can serve others and be recognized at the end of the year for their service. Students can do things on their own, but CJHS will organize at least one group service activity they can participate in each month, as well.

If you are active in the community and/or can be a point person for students to volunteer, please e-mail CJHS Parents Group Co-leader Nora Murphy at nora7@sbcglobal.net, or call 331-0421. We are especially interested in "learning service" opportunities, where students can volunteer and learn something at the same time. This sort of thing takes a little bit more thought. This program started on December 1st.

Request Submitted to the Kansas State Historic Sites Board

The letter on the right was sent to the Kansas Historic Sites Board of Review on behalf of the Oread Neighborhood. A survey of the area in District 1 has been requested in order to initiate the possibility of having an historic district designation in District 1.

According to Lynne Zollner, Historic Resources Administrator, notification about the grant review process is pending. In years past, the announcement has been made at the February Sites Board meeting. The public hearing is tentatively scheduled for Tuesday, February 10th at 9am at the Kansas State Historical Society. All funding is provisional because the State must receive a Federal allocation to be able to fund the program. Funding announcements should be made at the Sites Board meeting on February 21, 2009.

Anyone who is interested in going to Topeka and speaking on behalf of this proposal at the public hearing is encouraged to participate.

Lawrence Community Garden 921 Mississippi

The Lawrence Community Garden, located in the Oread neighborhood, was established in 1994. Due to the loss of a reliable water source from an adjacent residence, water is being hauled in and stored in 50-gallon barrels. If the neighborhood's CDBG capitol improvement project is approved, a water meter and hand-pump will be installed for the garden.



Who will pay for the water bill?

Gardeners will divide the cost of the water bill and a check will be written from the community garden account.

Who / How Many Use the Garden?

The Garden currently has 10 plots that serve 15-20 participants. Gardeners usually put in applications in the winter. *Now's the time to apply for space if you're interested.*

What Happens to the Produce?

All of the produce goes to the gardeners. Local community gardens also have a produce give-away and delivery system providing fresh produce to various food pantries in town.

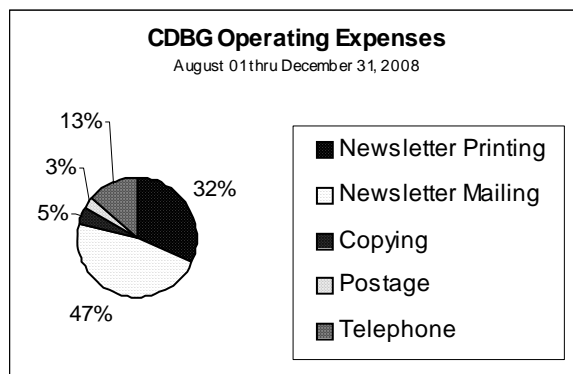
Where Does the Money Go?

CDBG Program Year 2008
August 01, 2008 through July 31, 2009

The Oread Neighborhood Association receives federal funding from a Community Development Block Grant to finance the operations of the organization. The allocation for Program Year 2008 totaled \$9,901. This is \$2,330 less than what was received for Program Year 2007. The neighborhood association identified the following measures to reduce spending during the 2008 budget year:

- Publish three newsletters per year instead of four; August, January and May.
- Reduce Coordinator's hours from 15 to 12 per week.

Neighbors are encouraged to visit the neighborhood's website on a regular basis. Current events and minutes from the monthly meetings can be found there. This will help you to stay informed about neighborhood activities on an on-going basis. The web address is: oreadneighborhood.org.



Oread Neighborhood Association • Lawrence, Ks. 66044



November 9, 2008

Kansas Historic Sites Board of Review
State Historic Preservation Office
6425 SW Sixth Avenue
Topeka, KS 66615

Dear Board Member:

The Oread Neighborhood Association is writing you in hopes of helping to preserve the integrity and character of an area in our neighborhood that is currently at great risk for demolition and transformation by developers. Many properties have already been lost and more are targeted for destruction. Developers are attempting to maximize profits of rental investments with little regard for the historic impact of the area or the impact on fulltime residents.

This area is in the northwest portion of the Oread Neighborhood just north of the Kansas University Memorial Stadium. There are a large number of smaller bungalow style houses that are being bought then torn down and replaced by large eight bedroom duplexes that are totally out of character in this neighborhood. The area is currently zoned duplex and has a mixture of single family owners as well as rental property owners. An earlier attempt to downzone the area to single family was not successful.

The Oread neighborhood Association believes that we urgently need to survey this area in order to proceed with efforts for historic designation. This is a vital neighborhood that will no doubt continue to deteriorate unless actions are taken to protect it. A thorough survey will provide a historic record of the area and allow our planning office to make the most informed judgments regarding future development requests. We strongly support the Historic Resources Survey Proposal submitted by the City of Lawrence.

Most sincerely,

Candice Davis, Vice President
Oread Neighborhood Association

**Recycle
This
Newsletter!**



Municipal Paper Recycling Drop Boxes

Green bins marked "Newspaper Only" can be found at:

- Checkers Foods Store, 2300 Louisiana
- Douglas County Bank, 9th & Kentucky
- Hillcrest Shopping Center, 9th & Centennial
- Hobby Lobby Creative Center, 1801 W 23rd

ONA Board of Directors

The Oread Neighborhood Association Newsletter is published three times each year through funding provided by a Community Development Block Grant, membership dues, and advertising revenues. The views expressed in the newsletter do not necessarily reflect the opinions of all the residents and landlords in the Oread neighborhood, the administrators of CDBG funds, or the business owners that advertise in the newsletter. Letters to the editor may be sent to the Oread office and may be published in part or in their entirety.

Below is the roster of the ONA Board of Directors. Elections for the 2008 program year will be held at the February 26, 2009, neighborhood meeting.

President:

Jerry Stubbs

Vice- President:

Candy Davis

Secretary:

Beth Reiber

Treasurer:

James Dunn

Representatives at Large:

Charity Grace
Ellie LeCompte

District Representatives:

District 1: Ann Blackhurst

District 2: Rene Diaz

District 3: Kyle Thompson

District 4: Carol von Tersch

District 5: Marci Francisco

District 6: Christy Kennedy

Coordinator: Jodi Went
Photographs: Paige Went

ONA Address:
P.O. Box 442065
Lawrence, KS, 66044
Phone: 785-842-5440

Help The Oread Neighborhood Association Continue to Serve You

If you would like to verify the date of your last donation, please call the ONA Office at 842-5440.

Make a Donation Today!

ONA Makes a Difference

The Oread Neighborhood Association has been serving the folks who live and/or own property between Kansas University and Downtown Lawrence for **31 years!**

During the last few years, ONA has been actively involved in reducing neighborhood blight, protecting the neighborhood's limited parking space, seeking options for homeless services that do not infringe upon residents and property owners, finding effective methods of deterring criminal and disorderly behavior, protecting the neighborhood from encroachment by The University of Kansas, preserving Oread's historic structures, and much more.

Residents and property owners in the Oread neighborhood are encouraged to donate \$1.00 to the neighborhood association each year. Oread's friends who don't live in the neighborhood can help too for only \$5.00. All donations help finance ONA's various efforts to improve the neighborhood, *and those donations are tax deductible.*

Thanks to these friends who have made a donation since August 01, 2008!

Candy Davis	Tom Hoffman and Lee
Kyle Thompson and Marcia Epstein	Blackledge
Tom Harper	Christopher Pumpelly
Melinda Henderson	Beth Reiber
Leonard Hollmann	Anthony and Renee Whaley

NAME _____

ADDRESS _____

PHONE _____

E-MAIL _____

I AM DONATING \$ _____ TO HELP ONA CONTINUE ITS WORK

I WOULD LIKE TO VOLUNTEER FOR:

_____ HOMES TOUR

_____ CLEAN UPS

_____ RESEARCH

_____ COMMITTEES

_____ GARDENING

_____ FUNDRAISING

_____ PHOTOGRAPHY

_____ OTHER _____

GENERAL MEMBERSHIP

\$1.00 _____

GENERAL MEMBERS: Any person eighteen years of age or older living or owning property within the Oread Neighborhood. A general member is entitled to vote at Oread Neighborhood Association meetings. Dues are encouraged, but not required, for General Members.

ASSOCIATE MEMBERSHIP

\$5.00 _____

ASSOCIATE MEMBERS: Any interested person eighteen years of age or older who neither lives in nor owns property within the Oread Neighborhood. An associate member is not entitled to vote at Oread Neighborhood Association meetings.

SUPPORTING MEMBERSHIP

\$25.00 _____

SUSTAINING MEMBERSHIP

\$50.00 _____

SEQUICENTENNIAL MEMBERSHIP

\$100.00 _____

Clip and Mail To:

Oread Neighborhood Association

PO Box 442065

Lawrence, KS, 66044

Oread Neighborhood Association

MASS.

STREET

MUSIC

LAWRENCE KS



14th & Mass St. • 785-843-3535

www.massstreetmusic.com

JENSEN LIQUOR

Neighborhood Wine & Beer Emporium

620 WEST NINTH STREET

LAWRENCE, KANSAS 66044

(785) 841-2256

SUNFLOWER

OUTDOOR & BIKE



Your Outdoor Headquarters!

From backpacks to bikes and everywhere in between, we've got your outdoor needs covered!

Come see us before your next adventure!

804 Massachusetts St. • Lawrence, Ks. • (785) 843-5000

Footprints

The Birkenstock Store

1339 Massachusetts

Lawrence, KS 66044-3431



Birkenstock

Oread Neighborhood Association

PRSR STD

U.S. POSTAGE

PAID

Lawrence, KS

Permit # 542